

Livonia Civic Center Library Wireless Internet Access

Free wireless internet access for the public is available at:

Livonia Civic Center Library

- In the public areas of the first and second floors of the Library
- In the Atrium

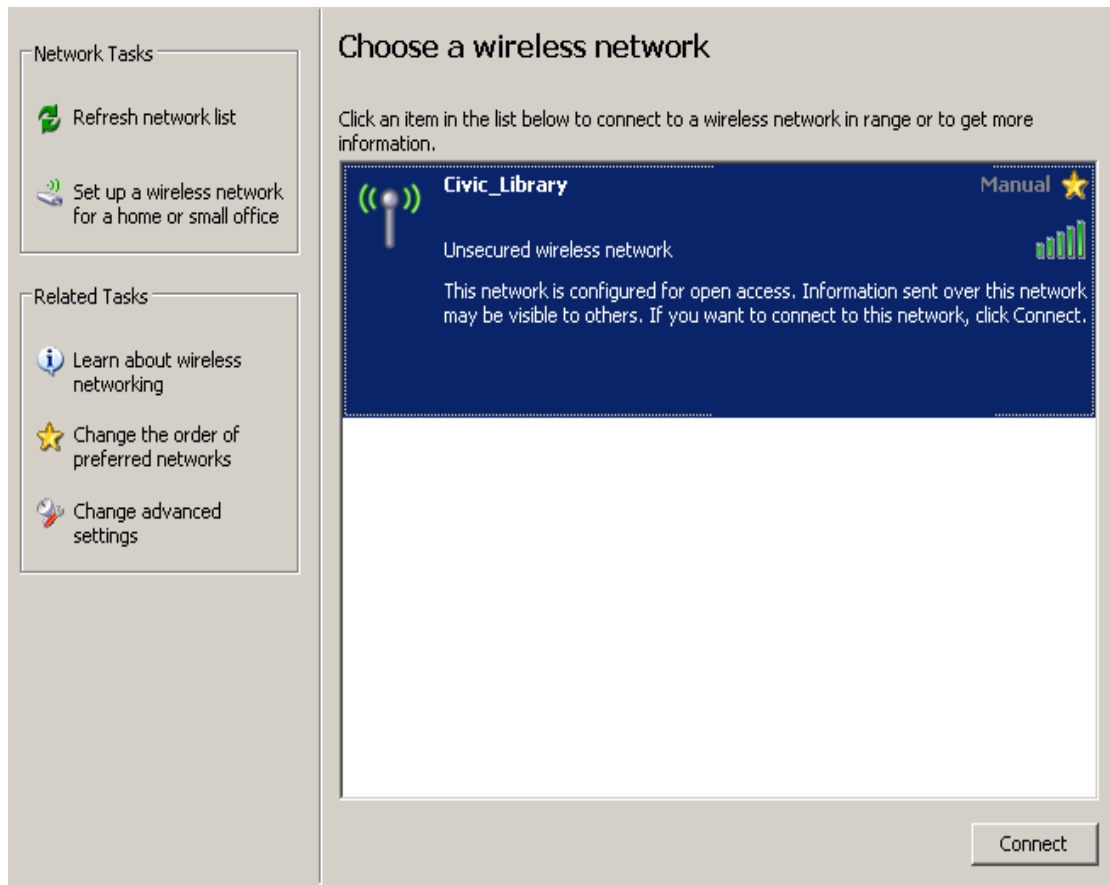
To Access the Wireless Network, you must:

- Have a computer running Windows 2000, Me, XP, Vista or a Mac
- Have your laptop equipped with an 802.11b or 802.11g wireless card.
- Have your computer configured to use TCP/IP
- Have your computer be able to obtain an IP address automatically via DHCP

To Connect to the Livonia Civic Center Library's Wireless Network:, follow these steps:

****Please note the below instructions are intended for Windows XP users. If your Operating System is different, please tailor directions to your interface.**

Step 1- The first step is for your computer to see that there is a wireless network available to access. This is accomplished by going into the control panel network connections, and right clicking on your wireless network adapter. Select **View Available Wireless Networks**. This will bring up a screen pictured below.



Step 2-You should now see the Civic_Library Network (SSID) listed on your screen. If you see any other networks listed, please disregard them. Click on **Civic_Library** so that it is highlighted. Once it is highlighted click connect in the bottom right corner. Once you click connect you should see a screen similar to Figure 2.

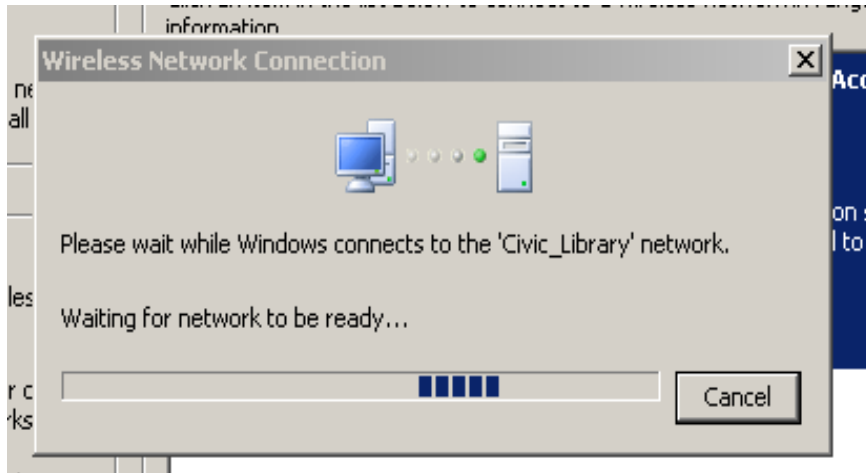


Figure 2

Steps 3-Please wait a moment while your computer connects to the network and acquires a network address. Once this occurs you will see an indication in the lower right corner of your screen indicating that you are connected, and which speed you are connected at. At this point, you may now open a web browser and login to the network. You will be asked to accept a security certificate. (Figure 3) You must accept this certificate to access the network. Once you click yes, you will be taken to the library's policy page (Figure 4).



Figure 3



Figure 4

At the bottom of the policy page is a login field that asks for a username and password. If you agree with the Library's Stated Policy, you may login using the username **guest** and the password **guest**. (See figure 5)

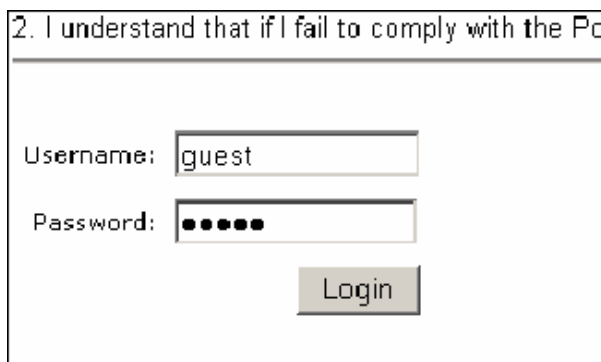
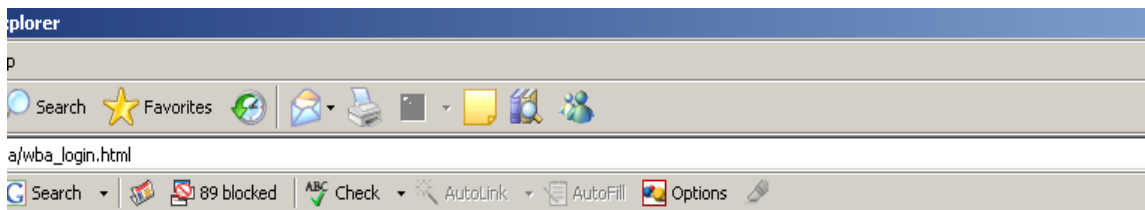


Figure 5

Step 4-Once you successfully enter the username and password you still see the following message in your web browser. (Figure 6)



Processing Authentication Request Now connecting you to the network

In a few seconds you should be redirected to:
<http://www.google.com/>

If the page does not appear after about 10 seconds, you may need to re-enter the URL into the Adc

Figure 6

Your computer will default to your browser's home page.

At this point you will now be able to browse the internet as you normally would.

To protect your equipment, you need to:

- Have your anti-virus software updated with the most current version
- Be sure your operating system software updated with the most current version
- Have firewall software installed

To secure personal information, you need to:

- Not transmit personal information such as social security, bank account or credit cards numbers, tax returns, home address, passwords, etc.
- Not leave your equipment unattended

Users of Wireless Networks must realize that in public wireless networks, data is being broadcast from your laptop to the Wireless Access Point "hotspot". Thus, these networks are not secure. Each user must secure their personal information.

Be aware that the wireless network is a shared resource offered to all patrons of the Livonia Public Library. It is a limited resource. There is only a defined amount of bandwidth available to be shared by all users. Please be considerate of other users by not downloading large files or streaming video and audio.

The Livonia Civic Center Library staff can not provide any technical support for patrons using their own computers. This includes your computer configuration and/or its connection to the Library's wireless network. The Livonia Public Library assumes no responsibility for any loss or damages done directly or indirectly to personal data or equipment or for any damage or injury arising from loss of privacy arising from use of its wireless connection or any connection to the Internet.